

Community Services Background Report

Solid Waste Overview
December 5, 2018



DPWandYOU.com | *Making a difference, together*



Introduction

Anne Arundel County Department of Public Works
Bureau of Waste Management Services

Rhody Holthaus, Deputy Director
410-222-7425
pwholt23@aacounty.org

Richard Bowen, Recycling and Waste Reduction Manager
410-222-7951
pwbowe63@aacounty.org



Key Points

1. Solid waste facilities must conform with Federal and State law and regulation, local zoning, and local site development requirements.
2. The Anne Arundel County Department of Public Works is the primary provider of solid waste services to County residents.
3. Private sector service providers manage the majority of solid waste for other sectors.



Law and Regulation

The Resource Conservation and Recovery Act (1976) – commonly referred to as RCRA – is our nation's primary law governing the disposal of solid and hazardous waste.

Maryland's laws appear in the Environment Article of the Maryland Code.

The Code of Maryland Regulations, often referred to as COMAR, is the official compilation of all administrative regulations issued by agencies of the state of Maryland. The Maryland Department of the Environment's (MDE) regulations are under Title 26.



Law and Regulation

The Anne Arundel County Code

Article 18. Zoning - includes requirements for certain solid waste uses.

Article 17. Subdivision and Development - includes the standards for site development.

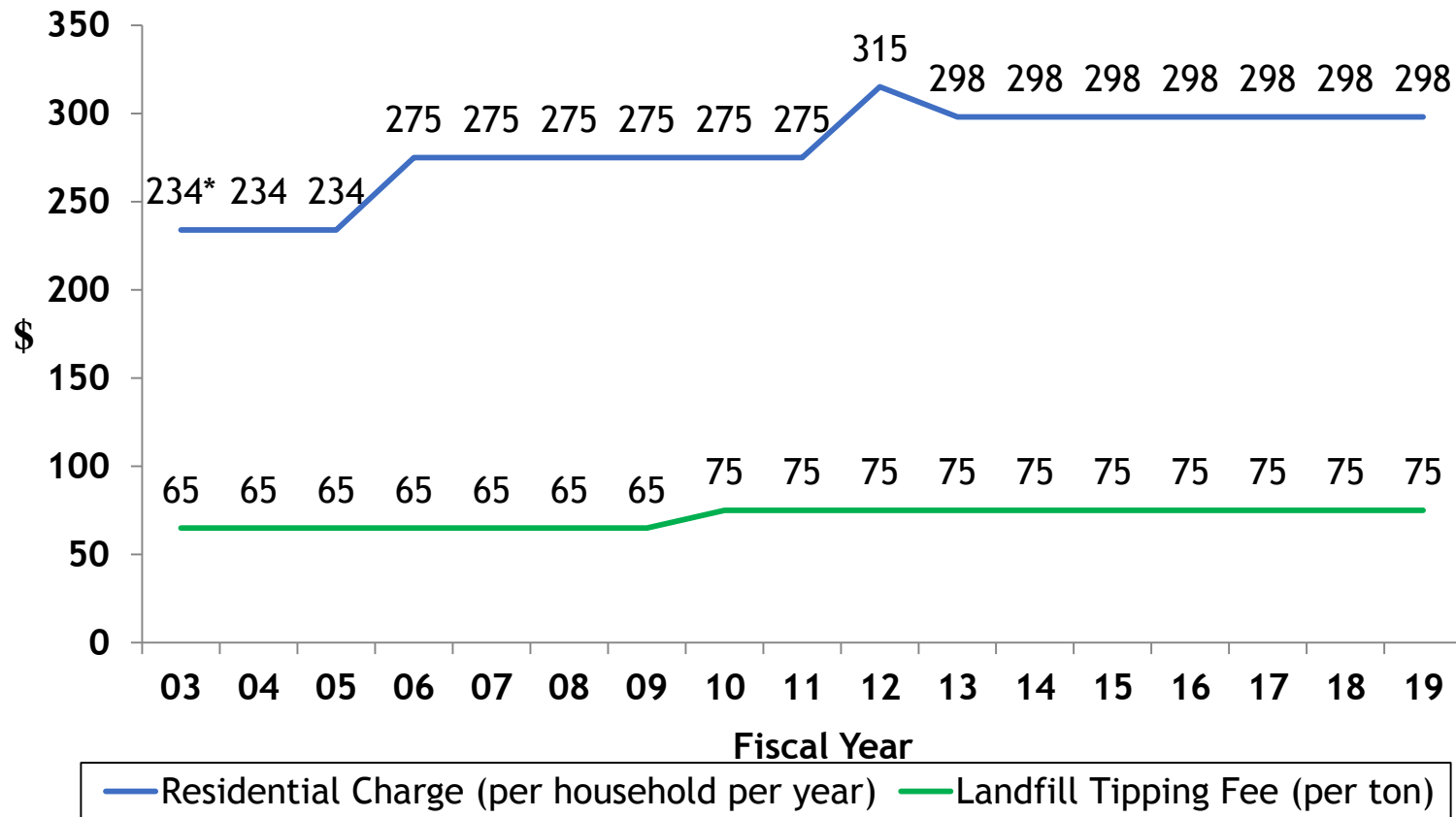


County-provided Services

Article 13. Public Works – addresses County-provided solid waste services and associated fees.



Residential Service Charge & Landfill Fee



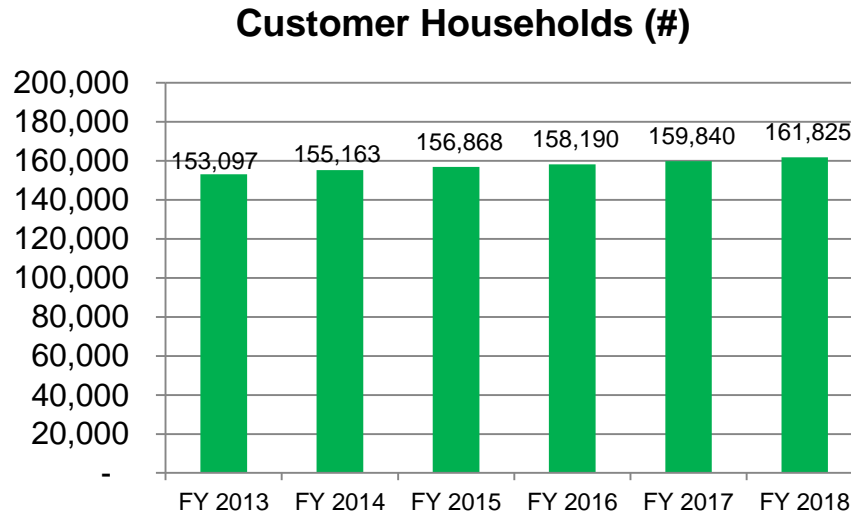
* Set in 1997



County-provided Services

Curbside Collection Service

- Once weekly single stream recycling, yard waste (leaves and grass), and trash collection
- Outsourced through fourteen (14) competitively bid contracts





DPWandYOU.com | *Making a difference, together*





DPWandYOU.com | *Making a difference, together*





DPWandYOU.com | *Making a difference, together*





DPWandYOU.com | *Making a difference, together*



County-operated Facilities

Operation of four (4) full-service collection facilities

- Northern Recycling Center (Glen Burnie)
- Central Recycling Center (Severn)
- Southern Recycling Center (Deale)
- Millersville Landfill and Resource Recovery Facility





DPWandYOU.com | *Making a difference, together*





DPWandYOU.com | *Making a difference, together*





DPWandYOU.com | *Making a difference, together*





DPWandYOU.com | *Making a difference, together*





DPWandYOU.com | *Making a difference, together*





DPWandYOU.com | *Making a difference, together*

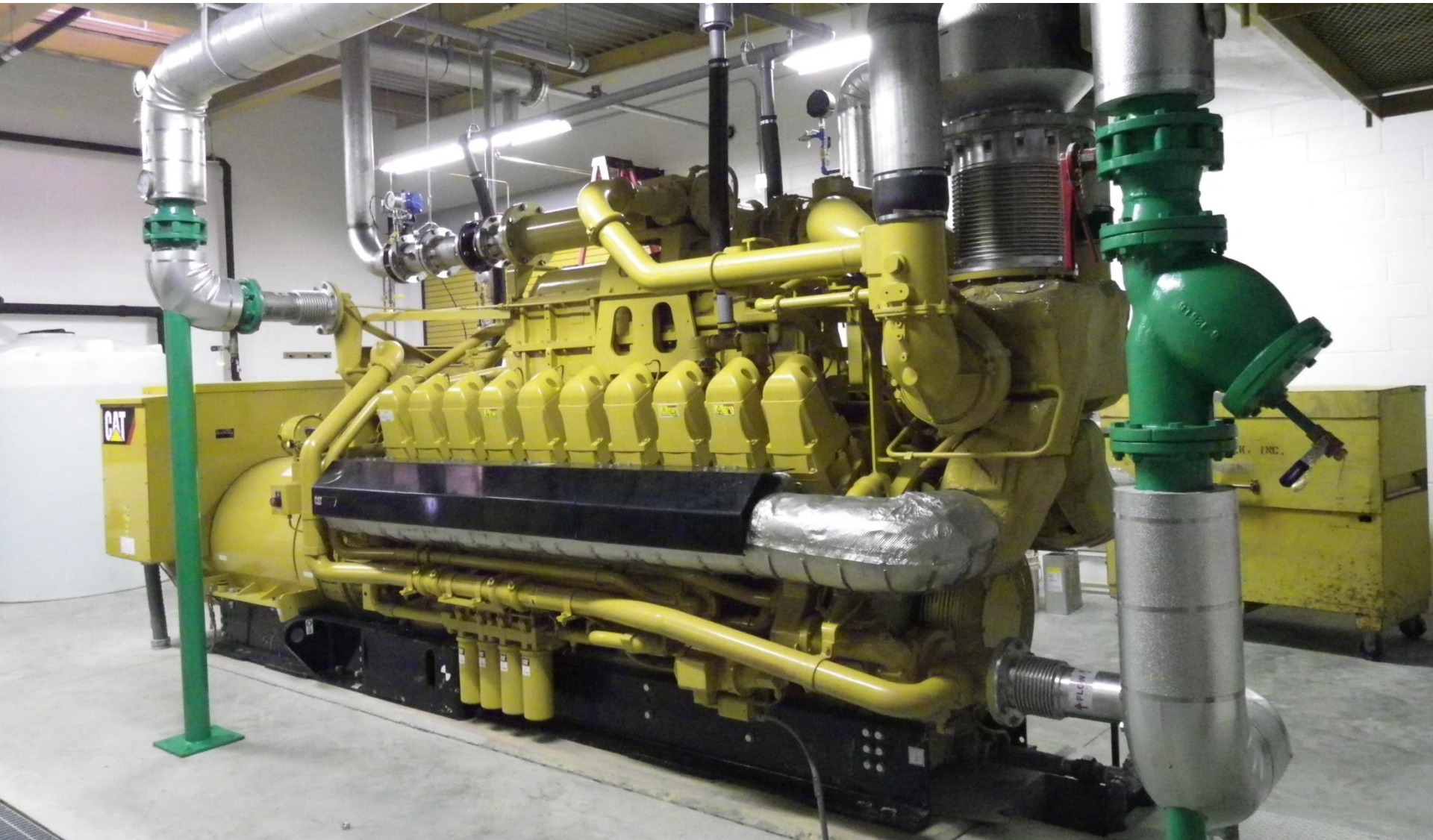






DPWandYOU.com | *Making a difference, together*





DPWandYOU.com | *Making a difference, together*



Critical Planning Objectives

Ensure adequate recycling and disposal **capacity** through expansion of facilities to support planned growth in accordance with the 10-Yr Solid Waste Management Plan

Meet federal, state and local **regulatory** requirements as mandated by Resource Conservation and Recovery Act (RCRA)

Operate, maintain and preserve **reliable** infrastructure to ensure continuity of service to support waste recycling, processing and disposal activities











Cardboard
Building



County Recycling Center
2000 West 10th Street
Anchorage, AK 99503

NO
Smoking

NO
Smoking















06.27.2016 08:57

Private Solid Waste Facilities (in Anne Arundel County)

Privately owned solid waste facilities exist within Anne Arundel County's borders

- Operations are regulated by MDE-issued permits
- Facilities must comply with local zoning
- Facilities handle solid waste from the region



Private Solid Waste Facilities (in Anne Arundel County)

Curtis Creek Processing Facility & Transfer Station
23 Stahl Point Road, Baltimore, MD

Annapolis Junction Processing Facility & Transfer Station
8077 Brock Bridge Road, Jessup, MD

Tolson & Associates Rubble Landfill
Capital Raceway Road, Crofton, MD

Biomedical Waste Services, Inc.
7610 Energy Parkway, Baltimore, MD

Source:

https://mde.maryland.gov/programs/LAND/SolidWaste/Documents/Permitted_Solid_Waste_Facilities.pdf



<https://www.aacounty.org/departments/public-works/waste-management/index.html>

Any questions?

Thank you



DPWandYOU.com | *Making a difference, together*

